



Linden

 **CORTINA**
LEATHERS

Visualize | Realize | The leather you imagine, and more.

Linden

Visualize | Realize | The leather you imagine, and more.

Linden is a pure aniline leather made in Germany from extra-large, hand-selected South German full grain hides. Offered in 33 refined colors tailored to residential interiors, Linden has the soft hand, smooth surface, and natural variation that gives fine leather its depth and presence. Because it is a full grain, pure-aniline leather, Linden retains the authentic beauty of the hide with subtle tonal shifts, natural markings, and variations in texture that make each hide unique. Its surface has a soft, understated sheen, and with time and use it will develop the kind of patina that makes furniture feel even more personal and layered. Disciplined yet warm, refined yet never rigid, Linden is a luxury leather that reflects a distinctly German point of view grounded in quality, restraint, and lasting beauty.

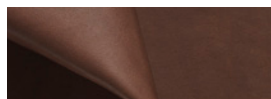
Environmental Stewardship: Linden is produced in a tannery which has achieved a Gold rating as audited to the Leather Working Group environmental stewardship and traceability standards. Further enhancing its sustainability profile, Linden is finished without the use of solvents or lead, emits low VOCs, and has achieved an Indoor Advantage Gold certificate from SCS.

Technical Specifications

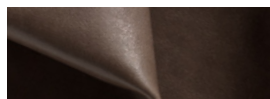
Origin	Germany
Raw Material	Full grain, hand-selected, extra-large South German bovine
Leather Type	Pure aniline, showcasing natural markings and grain patterns
Average Hide Size	55 – 60 sq.ft.
Thickness	1.0 – 1.2 mm
Abrasion Resistance	ASTM D7255: CS10 Taber Wheel 250 Cycles/250 gram weight
Light Fastness	ISO 105-B02: Blue Wool Scale \geq 2
Wet Crocking	ASTM D5053: Class 1
Flame Resistance	NFPA 260 Class 1; CAL TB117–2013
Performance Category	1
Cleaning Code	1



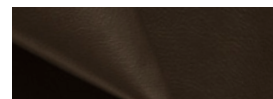
Available Colors (more on next page)



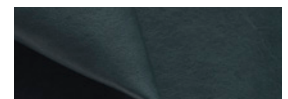
91-6 Teak



91-11 Dark Brown



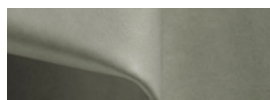
91-15 Peat



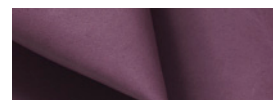
91-21 Deep Water



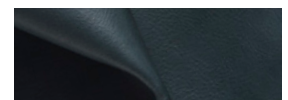
91-20 Patina



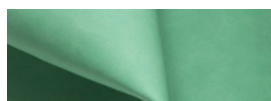
91-4 Marble



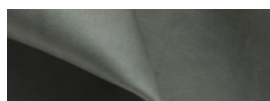
91-23 Lavendar



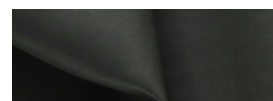
91-22 Indigo Blue



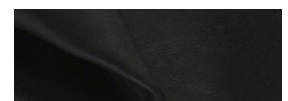
91-25 Mint



91-2 Slate



91-3 Flint



91-1 Black



CORTINA
LEATHERS

New York, New York
Conneaut, Ohio

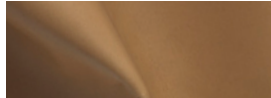
samples@cortinaleathers.com

Office: 800-338-6229

cortinaleathers.com

Linden

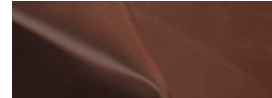
Available Colors (continued)



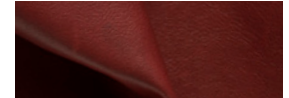
55-3 Leone



91-10 Cognac



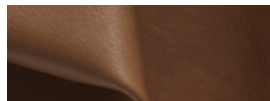
55.7 Mogano



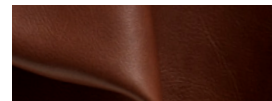
91-18 Elderberry



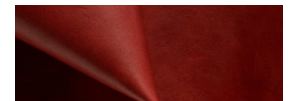
91-17 Sahara



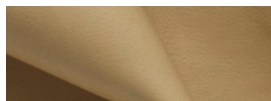
91-7 Terra



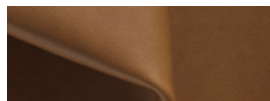
91-5 Copperhead



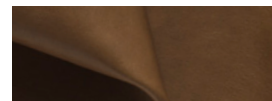
91-19 Cherry



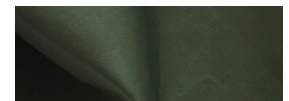
91-9 Sand



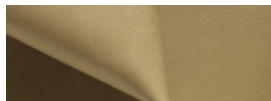
91-26 Brass



91-8 Bronze



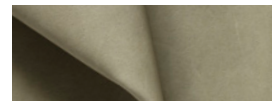
91-27 Greenstone



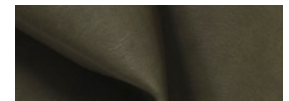
91-16 Reed



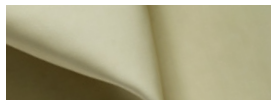
55-2 Bionda



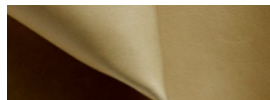
91-14 Light Olive



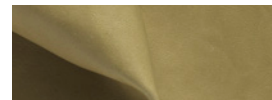
91-24 Fango



91-29 Porcelain



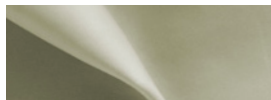
91-12 Desert



91-13 Savanne



91-28 Cardamon



55-1 Ecrú

Performance Category 1

Leathers with Performance Category 1 are considered by many to be the most beautiful and authentic leathers, most likely because they are least protected. These leathers include pure anilines, aniline leathers with less protection, nubuck leathers, suedes, etc. All Category 1 leathers are protected with water repellency to resist water spotting and are expected to patina, wear and age gracefully over time, making them perfect for many applications. However, these leathers are not recommended for uses where they will be subjected to heavy staining, abrasive wear or direct sunlight. More information is available on our website at cortinaleathers.com/resources/performance/.

Care & Cleaning Code 1

Pure aniline and aniline leathers are designed to age and patina gracefully, increasing in beauty over time. Cortina Leathers' pure aniline/aniline leathers are treated in the drum for water and soil repellency and so can be maintained with very little care. General upkeep requires only an occasional dusting with a clean cloth. Never use oils, saddle soaps, conditioners or cleaners on pure aniline or aniline leather. Pure aniline/aniline leathers have the least amount of protective finish, so spills and soiling should be removed immediately to avoid permanent discoloration. Should a spill occur, blot (pressing gently without rubbing) the spill with clean, dry sections of an absorbent cloth to soak up any remaining liquid. Do not rub. Should soiling remain, use lukewarm water to minimally dampen a clean white cloth with plain water and gently blot the affected area. Blot dry with paper towels or dry cloth, and allow to air dry. Caution must be used. It may be necessary to cease efforts prior to total stain removal because over-rubbing and over-wetting can do additional harm to the leather's appearance. It may not be possible to remove all stains from this natural product. More information is available on our website at cortinaleathers.com/resources/care-cleaning/.

Warranty

Leathers with Performance Category 1 have a 1 year limited warranty against manufacturing defects. See complete details at cortinaleathers.com/resources/warranty/.



New York, New York
Conneaut, Ohio
samples@cortinaleathers.com
Office: 800-338-6229
cortinaleathers.com