



Monterrey

Visualize | Realize | The leather you imagine, and more.

 **CORTINA**
LEATHERS

Monterrey

Visualize | Realize | The leather you imagine, and more.

Monterrey is prized for its rich and handsome colors and its especially supple hand—both qualities artfully designed for effortless upholstery applications. A unique combination of finishing oils and paraffin treatments creates a generous depth of color with a subtle bursting of light without distressing over time. Monterrey is crafted from clean, quality U.S. steers to minimize natural markings on this authentic, aniline leather with a fine, natural grain. The leather is tanned and finished in North America, reducing transportation-related environmental costs. Naturally protected from stains and offered at an appealing price, Monterrey exudes luxury for any interior application.

Environmental Stewardship: Monterrey is finished without the use of solvents or lead and emits low VOCs.

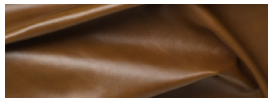
Technical Specifications

Origin	North America
Raw Material	U.S. steers
Leather Type	Aniline
Hide Size	48 – 52 sq.ft.
Thickness	1.1 – 1.3 mm
Abrasion Resistance	ASTM D7255: CS10 Taber Wheel 500 Cycles/500 gram weight
Light Fastness	ISO 105-B02: Blue Wool Scale ≥ 3
Wet Crocking	ASTM D5053: Class 4
Flame Resistance	NFPA 260: Class 1; CAL TB117–2013
Performance Category	2
Cleaning Code	2

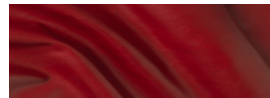
Available Colors



47-9 Goldenrod



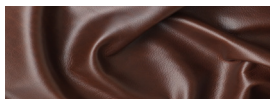
47-8 Saddle



47-7 Red



47-3 Cinnamon



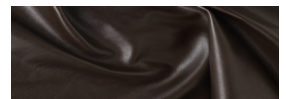
47-4 Nutmeg



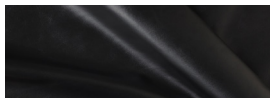
47-6 Redwood



47-2 Navy



47-11 Sage



47-1 Shadow



New York, New York
Conneaut, Ohio
samples@cortinaleathers.com
Office: 800-338-6229
cortinaleathers.com

Continued on next page

Monterrey

Care & Cleaning Code 2

Aniline leathers are designed to age gracefully, increasing in beauty over time. Very little care is required—general upkeep requires only an occasional dusting with a clean cloth. Never use oils, saddle soaps, harsh cleaners or cleaners containing abrasives on aniline leather. Periodically, you may wish to gently wipe the leather with a clean, slightly damp cloth to remove accumulated soil and allow it to air dry. Should a spill occur, remove immediately to avoid permanent discoloration by blotting (pressing gently without rubbing) with clean, dry sections of an absorbent cloth. Should soiling remain, a solution of lukewarm water and a mild soap such as Ivory® or a mild cleanser such as Woolite® may be used. Dampen a clean white cloth in the solution and gently wipe the affected area using a circular motion. Never apply the solution directly to the leather. Rinse completely with clean cloth which is damp with plain water until all cleaner is removed. Blot dry with a paper towels or dry cloth and allow to completely air dry. It may be necessary to repeat this procedure, allowing the leather to completely dry between applications. To avoid harming the leather, do not rub vigorously or for an extended period. It may not be possible to remove all stains from this natural product. More information is available on our website at cortinaleathers.com/resources/care-cleaning.

Performance Category 2

Leathers with Performance Category 2 retain their natural appearance while carrying additional protections against abrasion, staining and color fading. Aniline leathers with some protection and semi-anilines are found here. These leathers are suitable for a wide range of applications across a wide range of wear and stain risk, such as those found in commercial settings and dining areas. More information is available on our website at cortinaleathers.com/resources/performance.

Warranty

Leathers with Performance Category 2 have a 1 year limited warranty against manufacturing defects. See complete details at cortinaleathers.com/resources/warranty.



New York, New York
Conneaut, Ohio
samples@cortinaleathers.com
Office: 800-338-6229
cortinaleathers.com