



# Zigrino

Visualize | Realize | The leather you imagine, and more.

 **CORTINA**  
LEATHERS



# Zigrino

Visualize | Realize | The leather you imagine, and more.

Zigrino means “stingray” in Italian. Cortina created Zigrino to allow designers to showcase the beauty of stingray in a sustainable manner with embossed cowhides. Historically, the skin of a pearl rayfish or stingray was supremely valued for its round, closely-set calcified scales. Cortina replicates this iconic look, sometimes called “shagreen,” and highlights its beauty with a varied collection of tipped, washes and other exotic looks on a pattern that repeats the central “jewel” every eight inches.

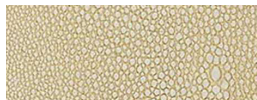
**Environmental Stewardship:** Zigrino is lead free, emits low VOCs, and has achieved an Indoor Advantage Gold certificate from SCS.

Origin	Italy
Raw Material	Full grain European bulls
Leather Type	Semi-aniline, embossed
Hide Size	20 – 25 sq.ft.
Thickness	1.0 – 1.2 mm
Abrasion Resistance	ASTM D7255: CS10 Taber Wheel 500 Cycles/500 gram weight
Light Fastness	ISO 105-B02: Blue Wool Scale ≥ 4
Wet Crocking	ASTM D5053: Class 4
Flame Resistance	NFPA 260: Class 1; CAL TB117-2013
Performance Category	2
Cleaning Code	3

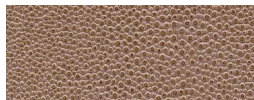


## Technical Specifications

## Available Colors



31-1 Avorio



31-5 Tabacco



31-6 Silver



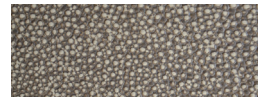
31-7 Starfire



31-8 Molten



31-9 Dark Side



31-13 Taupe Grey



New York, New York  
Conneaut, Ohio  
samples@cortinaleathers.com  
Office: 800-338-6229  
cortinaleathers.com

Continued on next page

# Zigrino

## Performance Category 2

Leathers with Performance Category 2 retain their natural appearance while carrying additional protections against abrasion, staining and color fading. Aniline leathers with some protection and semi-anilines are found here. These leathers are suitable for a wide range of applications across a wide range of wear and stain risk, such as those found in commercial settings and dining areas. More information is available on our website at [cortinaleathers.com/resources/performance/](https://cortinaleathers.com/resources/performance/).

## Care & Cleaning Code 3

Semi-aniline leathers are protected against scratching and scuffing and designed to maintain their beauty over time. Very little care is required—general upkeep requires only an occasional dusting with a clean cloth. Never use oils, saddle soaps, harsh cleaners or cleaners containing abrasives on semi-aniline leather. Periodically, you may wish to gently wipe the leather with a clean, damp cloth to remove accumulated soil, then allow it to air dry. Should a spill occur, blot (pressing gently without rubbing) immediately to avoid permanent discoloration with clean, dry sections of an absorbent cloth. Should soiling remain, a solution of lukewarm water and a mild soap such as Ivory® or a mild cleanser such as Woolite® may be used. Dampen a clean white cloth in the solution and gently wipe the affected area using a circular motion. Never apply the solution directly to the leather. Rinse completely with clean cloth which is damp with plain water until all cleaner is removed. Blot dry with a paper towels or dry cloth and allow to completely air dry. It may be necessary to repeat this procedure, allowing the leather to completely dry between applications. To avoid harming the leather, do not rub vigorously or for an extended period. It may not be possible to remove all stains from this natural product. More information is available on our website at [cortinaleathers.com/resources/care-cleaning/](https://cortinaleathers.com/resources/care-cleaning/).

## Warranty

Leathers with Performance Category 2 have a 1 year limited warranty against manufacturing defects. See complete details at [cortinaleathers.com/resources/warranty/](https://cortinaleathers.com/resources/warranty/).



New York, New York  
Conneaut, Ohio  
[samples@cortinaleathers.com](mailto:samples@cortinaleathers.com)  
Office: 800-338-6229  
[cortinaleathers.com](https://cortinaleathers.com)