



# Caprone

Visualize | Realize | The leather you imagine, and more.

 **CORTINA**  
LEATHERS

# Caprone

Visualize | Realize | The leather you imagine, and more.

Caprone is a superbly priced Italian leather with a soft hand and a classic grain, prized for its long color line, durability, and versatility. Cortina Leathers was the first to bring Italian leather design acumen to the U.S. upholstery market in the 1970s, and Caprone was the leather that set the tone: an Italian beauty in fashionable, bright colors that didn't distress or patina yet was incredibly durable—a stark contrast to the standard rugged, utilitarian leathers in the U.S. at the time. Caprone remains a top seller because it is regularly upgraded, made ever softer and cleaner in updated colorways. Still made in Italy on quality hides, Cortina's Caprone is soft and yielding to the touch, yet is highly resistant to stains, wear, and color fading due to its strong protective topcoat. IMO-approved, Caprone is a beautiful, practical, and well-priced mainstay leather ready for every interior application.

**Environmental Stewardship:** Caprone is finished without the use of solvents or lead, emits low VOCs and has achieved an Indoor Gold Advantage certificate from SCS.

## Technical Specifications

Origin	Italy
Raw Material	Top grain
Leather Type	Pigmented
Hide Size	50 – 55 sq.ft.
Thickness	1.0 – 1.2 mm
Abrasion Resistance	ASTM D7255: C510 Taber Wheel 1,000 Cycles/1,000 gram weight
Light Fastness	ISO 105-B02: Blue Wool Scale ≥ 5
Wet Crocking	ASTM D5053: Class 5
Flame Resistance	NFPA 260: Class 1; CAL TB117–2013; IMO 2010 FTP Part 8 (A.652(16))
Performance Category	3
Cleaning Code	4



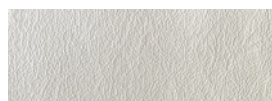
New York, New York  
Conneaut, Ohio

[samples@cortinaleathers.com](mailto:samples@cortinaleathers.com)

Office: 800-338-6229

[cortinaleathers.com](http://cortinaleathers.com)

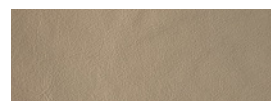
## Available Colors (more on next page)



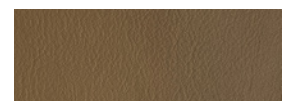
1-1 Snow



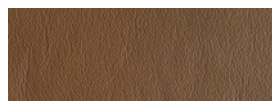
1-2 Trillium



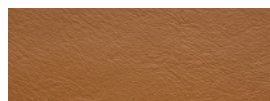
1-3 Cappuccino



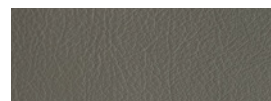
1-4 Acorn



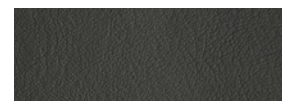
1-6 Caramel



1-7 Maple



1-10 Glove



1-12 Gunmetal



# Caprone

## Available Colors (continued)

			
1-15 Cranberry	1-16 Plum	1-18 Rosewood	1-26 Nightshade
			
1-73 Koala	1-74 Atlanta	1-82 Stucco	1-85 Redhead
			
1-71 Persimmon	1-87 Sublime	1-88 Tiffany	1-89 Laguna
			
1-27 Cloud	1-29 Evergreen	1-30 Holly	1-32 Blueberry
			
1-34 Cocoa	1-35 Cattail	1-37 Seal	1-38 Barolo
			
1-39 Ebony	1-42 Latte	1-44 Heron	1-46 Sand
			
1-47 Ochre	1-50 Khaki	1-51 Mesquite	1-52 Taupe
			
1-57 British Tan	1-59 Persian	1-70 Honey	1-90 It's A Boy
			
1-92 Pickoline	1-111 Bright White		

## Performance Category 3

Leathers with Performance Category 3 are protected for use in the most challenging wear, stain and fading environments such as commercial aviation, automotive, office task chairs and dining seating. Only pigmented and semi-aniline leathers with strong protection meet the standards for this category. Of course, these leathers are also suitable for any application where bright, uniform colors and exotic looks are desired. More information is available on our website at [cortinaleathers.com/resources/performance/](http://cortinaleathers.com/resources/performance/).



New York, New York  
 Conneaut, Ohio  
[samples@cortinaleathers.com](mailto:samples@cortinaleathers.com)  
 Office: 800-338-6229  
[cortinaleathers.com](http://cortinaleathers.com)

Continued on next page

# Caprone

## Care & Cleaning Code 4

Semi-aniline and pigmented leathers are resistance to wear, scratching and staining so they require very little maintenance to maintain their beauty over time. General upkeep requires only an occasional dusting with a clean cloth. Periodically, you may wish to gently wipe the leather with a clean, damp cloth to remove accumulated soil and allow it to air dry. Leather conditioners and protectants, such as those by Leather Master® can be used as directed. Should a spill occur, blot (pressing gently without rubbing) immediately using clean, dry sections of an absorbent cloth or paper towel. Should soiling remain or for a more thorough cleaning, Cortina Leathers Universal Cleaner High-Tech Wipes® or a solution of lukewarm water and a mild cleaner, such as Ivory® soap or Woolite®, may be used. Dampen a clean white cloth and gently wipe the affected area using a circular motion. Rinse completely with clean sections of cloth which is damp with plain water until all cleaner is removed. Blot dry with paper towels or dry cloth and allow to completely air dry. Repeat the cleaning process as needed, allowing the leather to dry between applications. While it is possible to remove many deep stains and soiling from semi-aniline and pigmented leathers, it may not be possible to remove all stains from this natural product. More information is available on our website at [cortinaleathers.com/resources/care-cleaning/](http://cortinaleathers.com/resources/care-cleaning/).

## Warranty

Leathers with Performance Category 3 have a 5 year limited warranty against manufacturing defects. See complete details at [cortinaleathers.com/resources/warranty/](http://cortinaleathers.com/resources/warranty/).



**CORTINA**  
LEATHERS

New York, New York  
Conneaut, Ohio

[samples@cortinaleathers.com](mailto:samples@cortinaleathers.com)

Office: 800-338-6229

[cortinaleathers.com](http://cortinaleathers.com)