

# Roma



Visualize | Realize | The leather you imagine, and more.



# Roma

Visualize | Realize | The leather you imagine, and more.

The finest upholstery tannery in Italy produces the elegant, sophisticated calf-skin leather we call Roma. The softest of upholstery weight leather, Roma is a full grain, fully aniline dyed leather made exclusively from premium dairy calf hides from Holland. Only a light color treatment is applied in finishing to allow the natural beauty and fine grain of this truly exquisite leather to be revealed. Roma's buttery softness, resilience, and light weight allow the hides to tailor beautifully, making it the inspired choice where the utmost in luxury is desired.

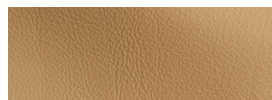
**Environmental Stewardship:** Roma is lead free, emits low VOCs, and has achieved an Indoor Advantage Gold certificate from SCS.

Origin	Italy
Raw Material	Full grain, Northern European calf
Leather Type	Aniline
Hide Size	25 – 30 sq.ft.
Thickness	1.0 – 1.2 mm
Abrasion Resistance	ASTM D7255: CS10 Wheel Taber 500 Cycles/500 gram weight
Light Fastness	ISO 105-B02: Blue Wool Scale ≥ 3
Wet Crocking	ASTM D 5053: Class 3
Flame Resistance	NFPA 260: Class 1; CAL TB117-2013
Performance Category	2
Cleaning Code	2

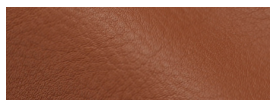
## Technical Specifications



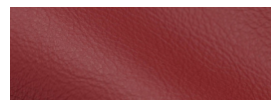
## Available Colors



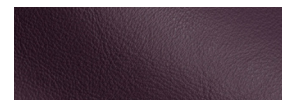
3-3 Birch



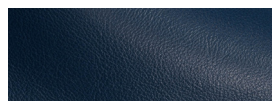
3-16 Saddle



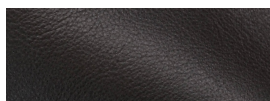
3-18 Crimson



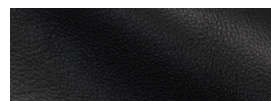
3-20 Eggplant



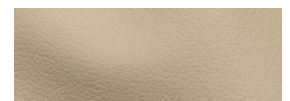
3-26 Bluejay



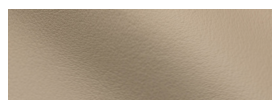
3-29 Espresso



3-30 Onyx



3-31 Panna



3-32 Tusk



3-34 Talc



New York, New York  
Conneaut, Ohio

[samples@cortinaleathers.com](mailto:samples@cortinaleathers.com)

Office: 800-338-6229

[cortinaleathers.com](http://cortinaleathers.com)

Continued on next page

# Roma

## Performance Category 2

Leathers with Performance Category 2 retain their natural appearance while carrying additional protections against abrasion, staining and color fading. Aniline leathers with some protection and semi-anilines are found here. These leathers are suitable for a wide range of applications across a wide range of wear and stain risk, such as those found in commercial settings and dining areas. More information is available on our website at [cortinaleathers.com/resources/performance/](http://cortinaleathers.com/resources/performance/).

## Care & Cleaning Code 2

Aniline leathers are designed to age gracefully, increasing in beauty over time. Very little care is required—general upkeep requires only an occasional dusting with a clean cloth. Never use oils, saddle soaps, harsh cleaners or cleaners containing abrasives on aniline leather. Periodically, you may wish to gently wipe the leather with a clean, slightly damp cloth to remove accumulated soil and allow it to air dry. Should a spill occur, remove immediately to avoid permanent discoloration by blotting (pressing gently without rubbing) with clean, dry sections of an absorbent cloth. Should soiling remain, a solution of lukewarm water and a mild soap such as Ivory® or a mild cleanser such as Woolite® may be used. Dampen a clean white cloth in the solution and gently wipe the affected area using a circular motion. Never apply the solution directly to the leather. Rinse completely with clean cloth which is damp with plain water until all cleaner is removed. Blot dry with a paper towels or dry cloth and allow to completely air dry. It may be necessary to repeat this procedure, allowing the leather to completely dry between applications. To avoid harming the leather, do not rub vigorously or for an extended period. It may not be possible to remove all stains from this natural product. More information is available on our website at [cortinaleathers.com/resources/care-cleaning/](http://cortinaleathers.com/resources/care-cleaning/).

## Warranty

Leathers with Performance Category 2 have a 1 year limited warranty against manufacturing defects. See complete details at [cortinaleathers.com/resources/warranty/](http://cortinaleathers.com/resources/warranty/).



**CORTINA**  
LEATHERS

New York, New York  
Conneaut, Ohio

[samples@cortinaleathers.com](mailto:samples@cortinaleathers.com)

Office: 800-338-6229

[cortinaleathers.com](http://cortinaleathers.com)