



Florence  CRYPTON[®]

Stain resistant | Bleach cleanable | Antibacterial

 CORTINA
LEATHERS

Florence



Stain resistant | Bleach cleanable | Antibacterial

In the heart of Italy lies the inspiration for one of Cortina's best-selling performance leathers — Florence. The warm and familiar colors and gentle distressing evoke the rich tapestry that defines a magical city: cobbled streets, historic facades, and enduring craftsmanship. Made in the U.S. with meticulous attention to detail, Cortina's Florence collection is a symbol of this craftsmanship. In addition to its timeless beauty, it's the practicality of Florence that makes it stand out. Unlike similar aniline distressed leathers, Florence is offered at an attainable price-point and protected with a Crypton® finish built in for cleanability and sustainability with confidence in all interiors. With a waxy, firmer hand, Florence was designed to highlight the natural markings of truly authentic genuine leather and will develop a time-tested story of luxury with a slowly evolving patina.

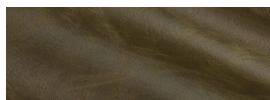
Environmental Stewardship: Florence is produced in a tannery which has achieved a gold rating as audited to the Leather Working Group environmental stewardship and traceability standards. Further enhancing its sustainability profile, Florence is finished without the use of solvents or lead, emits low VOCs and has achieved an Indoor Gold Advantage certificate from SCS.

Technical Specifications

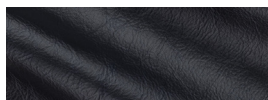
Origin	USA
Raw Material	Top grain, aniline drum dyed
Leather Type	Aniline, protected by Crypton®
Hide Size	48 – 52 sq.ft.
Thickness	1.0 – 1.2 mm
Abrasion Resistance	ASTM D7255: C510 Wheel Taber 500 Cycles/500 gram weight
Light Fastness	ISO 105-B02: Blue Wool Scale ≥ 3
Wet Crocking	ASTM D5053: Class 4
Antibacterial	AATCC 100: 99.9% Reduction of Bacteria – AATCC 4352 Klebsiella Pneumoniae and AATCC 6538 Staphylococcus Aureus
Stain Release	AATCC 130–2000: 5 Rating (Excellent) for Coffee, Wine, Ketchup, Hair Products, Sunscreen, Betadine and Body Fluids; Withstands a 5% bleach solution
Flame Resistance	NFPA 260: Class 1; CAL TB117–2013; Boston Fire Code; NY/NJ PortAuthority; IMO 2010 FTP Part 8 (A.652(16))
Performance Category	2
Cleaning Code	5



Available Colors (more on next page)



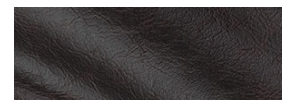
FLOCY-9688 Boboli Gardens



FLOCY-9689 Mezza Luna



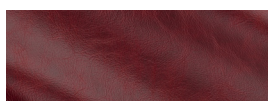
FLOCY-9690 Terra



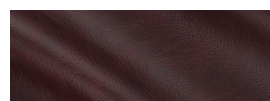
FLOCY-9691 Espresso



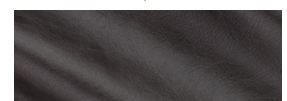
FLOCY-9692 Almond Biscotti



FLOCY-9693 Red Lily



FLOCY-9694 Vino Rosso



FLOCY-9695 Struzzo



New York, New York
Conneaut, Ohio

cortinaleathers.com

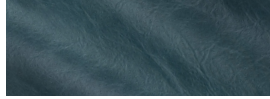
Florence

powered by
CRYPTON.

Available Colors (continued)



FLOCY-9696 Brick Path



FLOCY-9697 Oceano



FLOCY-9738 Duomo



FLOCY-9832 Basilica



FLOCY-9833 Loggia



FLOCY-9834 Lorenzo



FLOCY-9859 Scorza



FLOCY-9988 Black

Performance Category 2

Leathers with Performance Category 2 retain their natural appearance while carrying additional protections against abrasion, staining and color fading. Aniline leathers with some protection and semi-anilines are found here. These leathers are suitable for a wide range of applications across a wide range of wear and stain risk, such as those found in commercial settings and dining areas. Several of these leathers have additional Crypton® protection. More information is available on our website at cortinaleathers.com/resources/performance/ and cortinaleathers.com/resources/crypton/.

Care & Cleaning Code 5

Cortina Leathers with Crypton® provide the industry's greatest stain resistance and cleanability. Stains which can be easily removed include wine, coffee, sunscreen, hair gel, hair mousse, vinegar, blood, urine and most other stains from food and typical soiling. Should a spill occur, blot (pressing gently without rubbing) immediately using clean, dry sections of an absorbent cloth or paper towels. Should soiling remain or for a more thorough cleaning, Cortina Leathers Universal Cleaner High-Tech Wipes® or a solution of lukewarm water and a mild cleaner, such as Ivory® soap or Woolite®, may be used. Dampen a clean white cloth and gently wipe the affected area using a circular motion. Rinse completely with clean sections of cloth which is damp with plain water until all cleaner is removed. Blot dry with paper towels or dry cloth and allow to completely air dry. Repeat the cleaning process as needed, allowing the leather to dry between applications. If necessary, Cortina's running-line Crypton protected leathers can be cleaned with cleaners containing up to a 5% bleach solution (Sodium Hypochlorite). However, most stains can be easily removed using just gentle soap and water or the readily available commercial and household cleaning products listed on our website.

Note: To ensure complete removal of any stain from Crypton-treated leathers, the cleaning process must be undertaken within 60 minutes of any spillage or staining occurring. Successful stain removal will become less possible over time, so always treat spills and stains immediately. Avoid the excessive application of cleaning products on seams or stitching. Visit cortinaleathers.com/resources/care-cleaning/ for more information.

Warranty

Leathers with Performance Category 2 have a 1 year limited warranty against manufacturing defects. Leathers with Crypton protection also feature a 3 year warranty for stain resistance. See complete details at cortinaleathers.com/resources/warranty/.



CORTINA
LEATHERS

New York, New York
Conneaut, Ohio

samples@cortinaleathers.com

Office: 800-338-6229

cortinaleathers.com